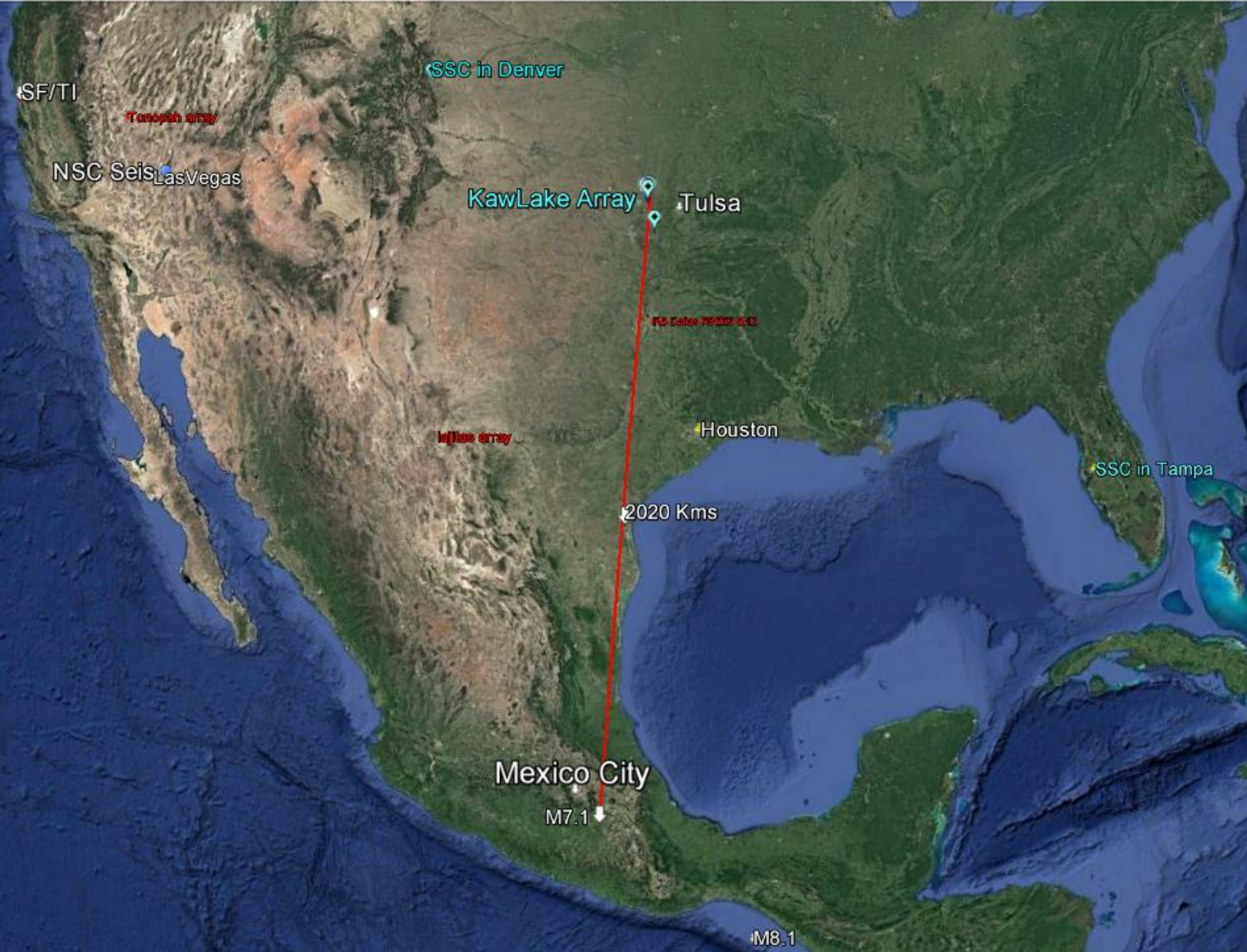


# M7.1 EQ, near Mexico City, recorded with geophones in KawLake array-in Oklahoma

By BC-Geophysics in Boulder City, NV for Seismic Source Company in Ponca City, OK



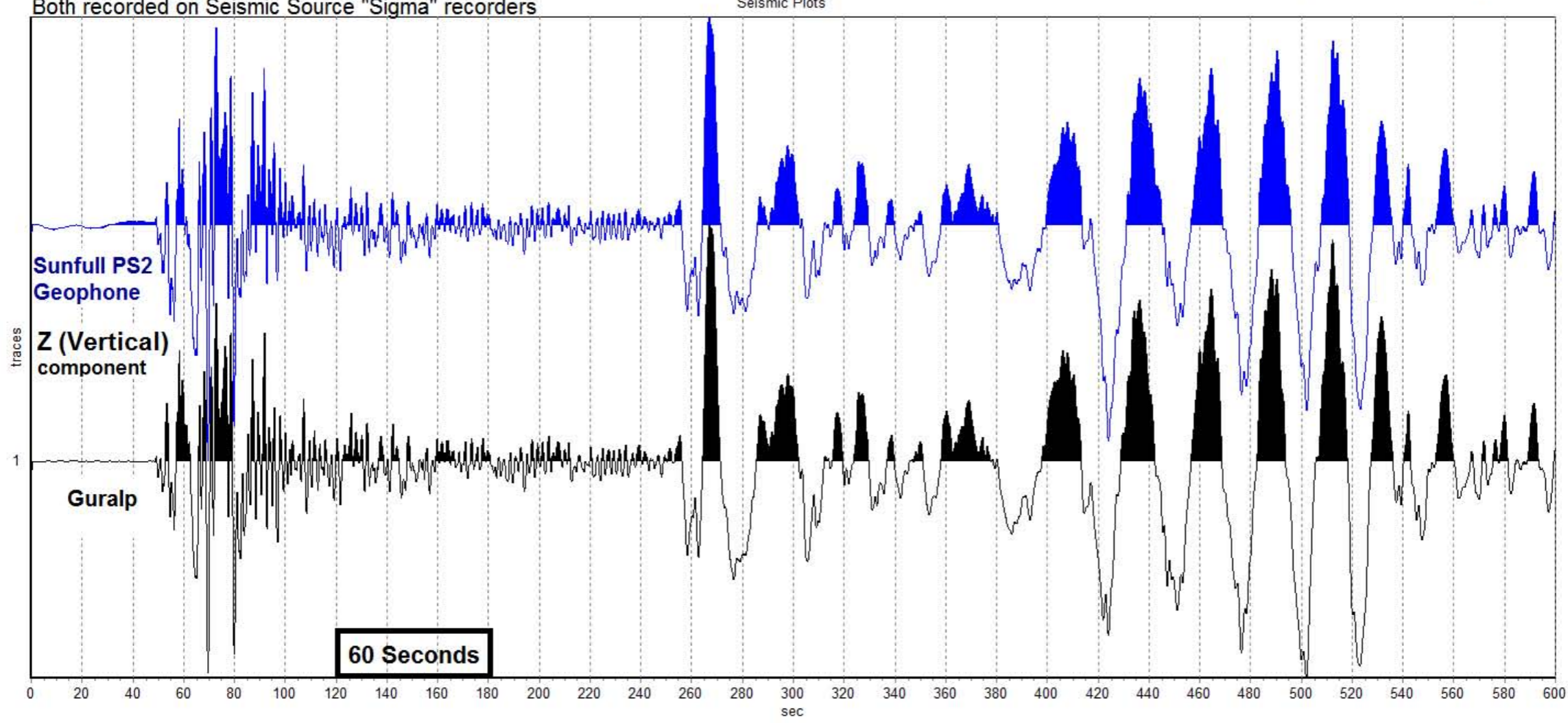
**Legend**

- Feature 1
- Line Measure
- Line Measure



### M7.1 Raboso, Mexico recorded with Guralp (T=30s) and Sunfull Geophone (2Hz modified to 40s) in KawLake Array near Ponca City, OK

Both recorded on Seismic Source "Sigma" recorders



Absolute Max  
 Equalize  
 AGC  
Window msec   
 Individual Scale

Chan	Scale
<input checked="" type="checkbox"/> 1	5.4205821502
<input type="checkbox"/> 2	2.8049959957
<input type="checkbox"/> 3	2.8049959957

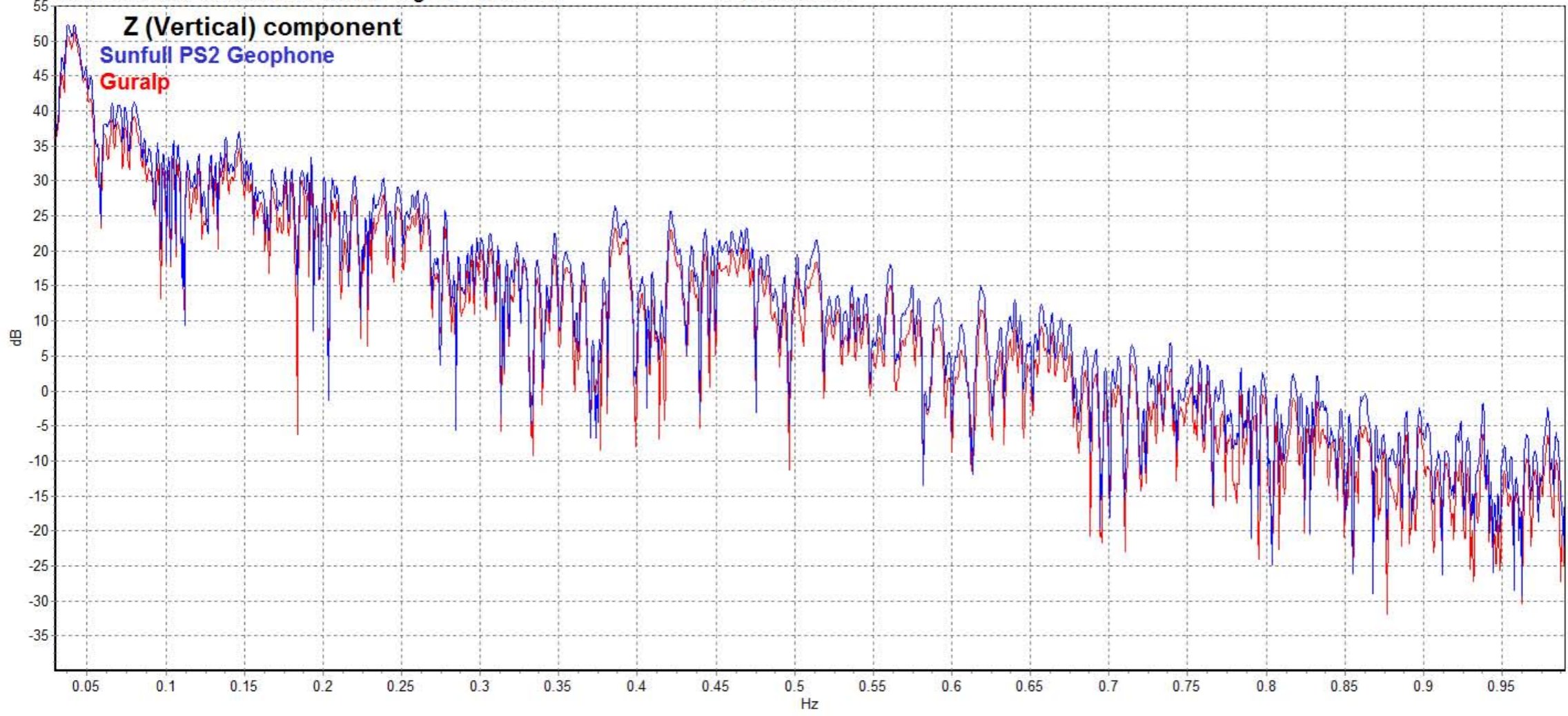
Scale     
 Clip Channels

1 - Chan 1 (Mexico\_mag7\_Guralp\_1200sec\_Event) — 1 - Chan 1 (Mexico\_mag7\_PS2\_1200sec\_Event\_17)

**Recording 2020 km from EQ<<<< By BC-Geophysics in Boulder City, NV for Seismic Source Company in Ponca City, OK**



### M7.1 Raboso, Mexico recorded with Guralp (T=30s) and Sunfull Geophone (2Hz modified to 40s) in KawLake Array near Ponca City, OK Both recorded on Seismic Source "Sigma" recorders



1 - Chan 1 (Mexico\_mag7\_Guralp\_1200sec\_Event) 1 - Chan 1 (Mexico\_mag7\_PS2\_1200sec\_Event\_17)

**Recording 2020 km from EQ<<<< By BC-Geophysics in Boulder City, NV for Seismic Source Company in Ponca City, OK**

Absolute Max  
 Equalize  
 AGC  
Window msec:   
 Individual Scale

Chan	Scale
<input checked="" type="checkbox"/> 1	3.8255361599
<input type="checkbox"/> 2	2.80499599571
<input type="checkbox"/> 3	2.80499599571

Scale     
 Clip Channels



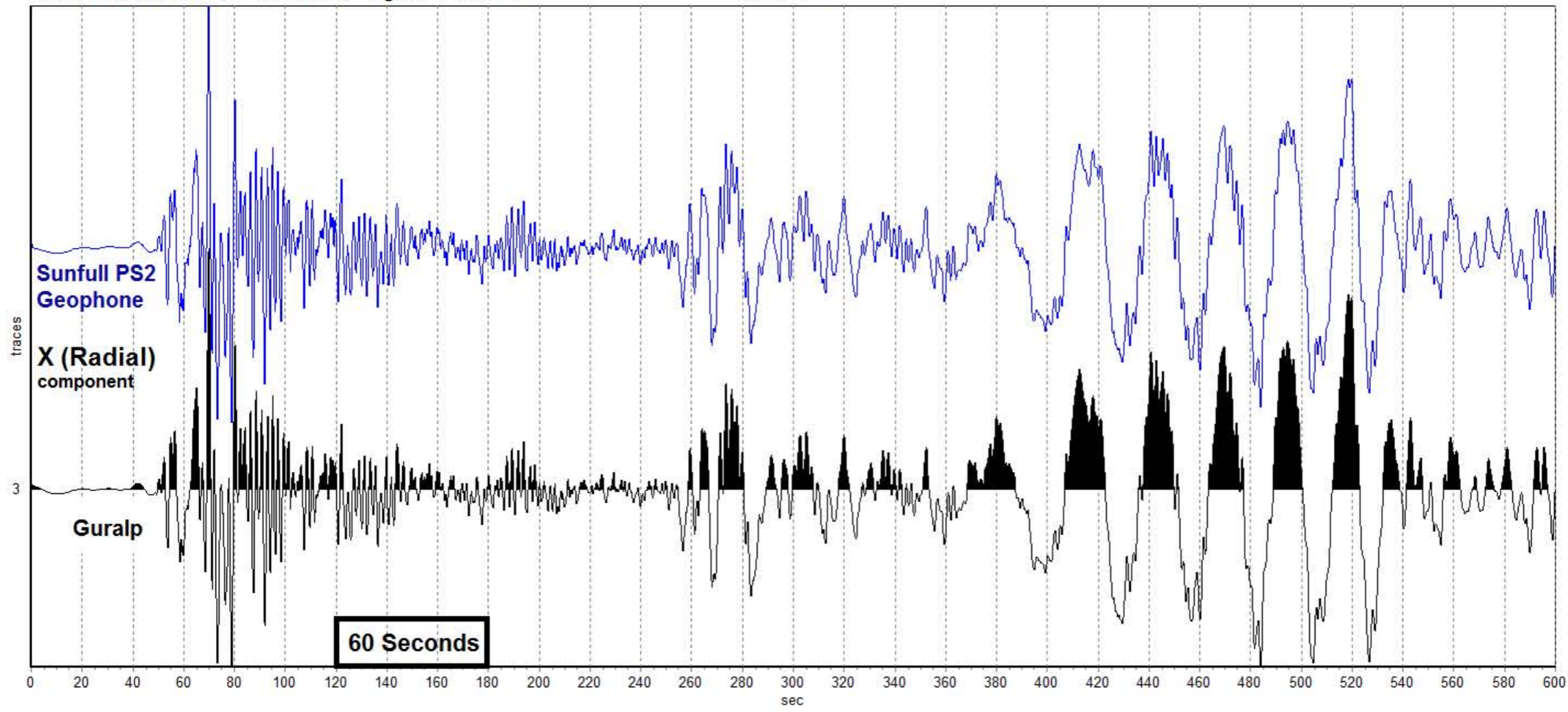
File View Edit Acquisition Options Window Help

Clear Open Save Print Preview Start Stop Repeat Axis Full View New Plot Signal Spectrum Correlation Noise

Picker Geometry Vibrator Comment... Invert Remove DC HCF LCF Notch Device Tile H Tile V Cascade [Roll] [Roll] [Roll] [Roll]

### M7.1 Raboso, Mexico recorded with Guralp (T=30s) and Sunfull Geophone (2Hz modified to 40s) in KawLake Array near Ponca City, OK

Both recorded on Seismic Source "Sigma" recorders



Absolute Max

Equalize

AGC

Window msec

Individual Scale

Chan	Scale
<input type="checkbox"/> 1	3.8255361599
<input type="checkbox"/> 2	5.5758166122
<input checked="" type="checkbox"/> 3	5.2519180528

Scale

Clip Channels

3 - Chan 3 (Mexico\_mag7\_Guralp\_1200sec\_Event) — 3 - Chan 3 (Mexico\_mag7\_PS2\_1200sec\_Event\_17)

**Recording 2020 km from EQ<<<< By BC-Geophysics in Boulder City, NV for Seismic Source Company in Ponca City, OK**

Comment | Record Info | Plot Info | Status | Errors | Communication | Network

Mexico\_mag7\_Guralp\_1200sec\_Event\_170919\_181800\_3 C data.sgy

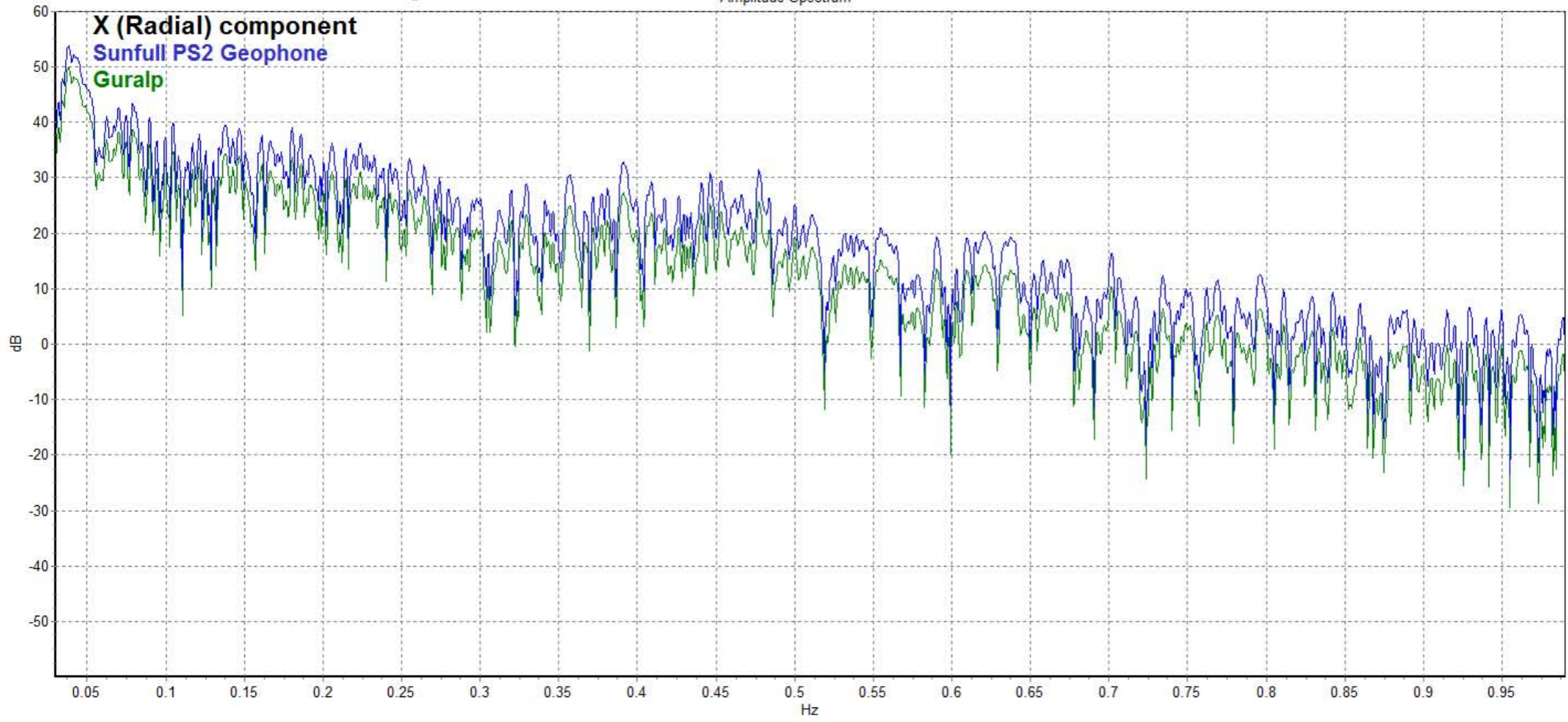


File View Edit Acquisition Options Window Help

Clear Open Save Print Preview Start Stop Repeat Axis Full View New Plot Signal Spectrum Correlation Noise

Picker Geometry Vibrator Comment... Invert Remove DC HCF LCF Notch Device Tile H Tile V Cascade [Roll <Roll >Roll >]

### M7.1 Raboso, Mexico recorded with Guralp (T=30s) and Sunfull Geophone (2Hz modified to 40s) in KawLake Array near Ponca City, OK Both recorded on Seismic Source "Sigma" recorders



— 3 - Chan 3 (Mexico\_mag7\_Guralp\_1200sec\_Event) — 3 - Chan 3 (Mexico\_mag7\_PS2\_1200sec\_Event\_17)

**Recording 2020 km from EQ<<<< By BC-Geophysics in Boulder City, NV for Seismic Source Company in Ponca City, OK**

Comment | Record Info | Plot Info | Status | Errors | Communication | Network

Mexico\_mag7\_Guralp\_1200sec\_Event\_170919\_181800\_3 C data.sgy

Absolute Max  
 Equalize  
 AGC  
Window msec   
 Individual Scale

Chan	Scale
<input type="checkbox"/> 1	3.8255361599
<input type="checkbox"/> 2	5.5758166122
<input checked="" type="checkbox"/> 3	2.8050117741

Scale     
 Clip Channels



File View Edit Acquisition Options Window Help

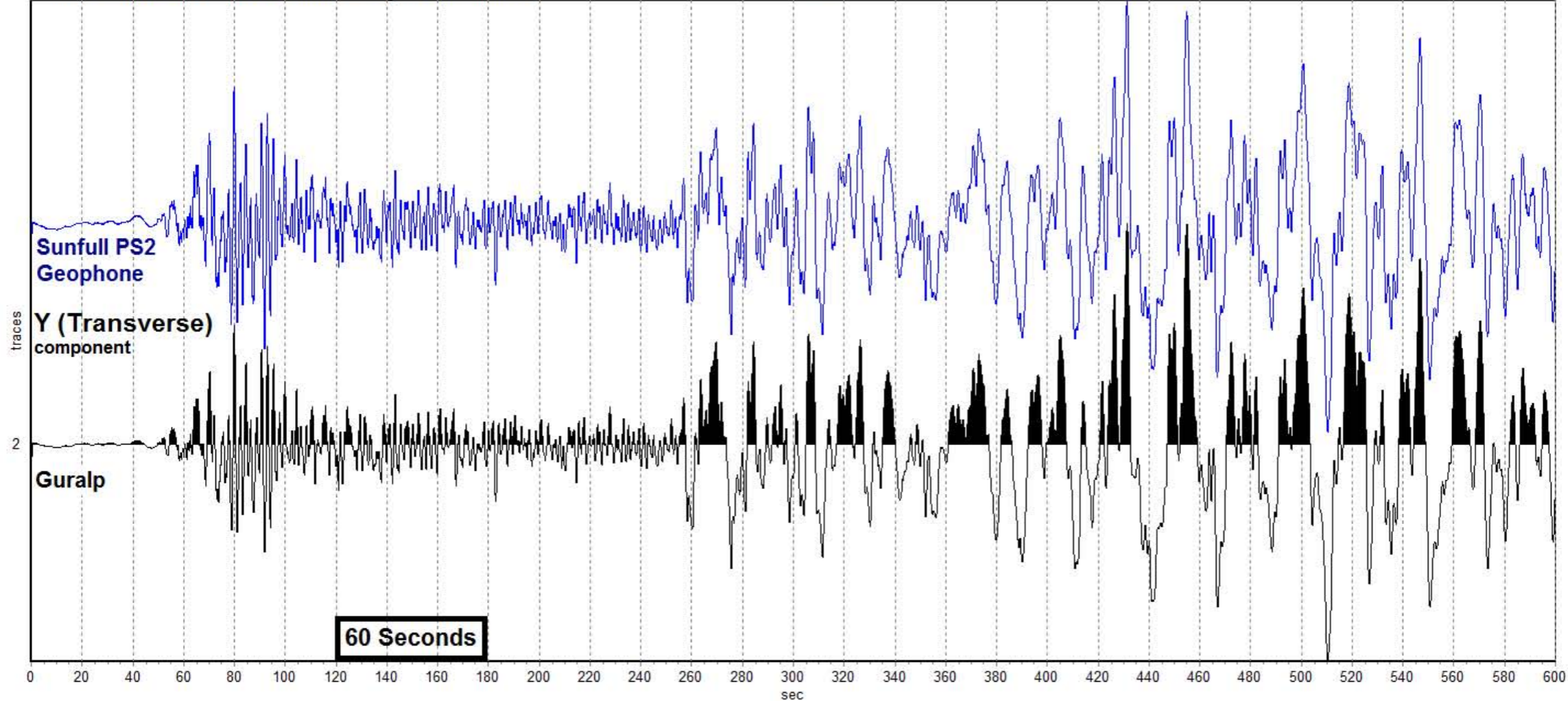
Clear Open Save Print Preview Start Stop Repeat Axis Full View New Plot Signal Spectrum Correlation Noise

Picker Geometry Vibrator Comment... Invert Remove DC HCF LCF Notch Device Tile H Tile V Cascade [Roll <Roll >Roll >]

### M7.1 Raboso, Mexico recorded with Guralp (T=30s) and Sunfull Geophone (2Hz modified to 40s) in KawLake Array near Ponca City, OK

Both recorded on Seismic Source "Sigma" recorders

Seismic Plots



2 - Chan 2 (Mexico\_mag7\_Guralp\_1200sec\_Event) — 2 - Chan 2 (Mexico\_mag7\_PS2\_1200sec\_Event\_17)

**Recording 2020 km from EQ<<<< By BC-Geophysics in Boulder City, NV for Seismic Source Company in Ponca City, OK**

Absolute Max

Equalize

AGC

Window msec

Individual Scale

Chan	Scale
<input type="checkbox"/> 1	3.8255361599
<input checked="" type="checkbox"/> 2	23.444354778
<input type="checkbox"/> 3	5.2522349184

Scale

Clip Channels

Comment | Record Info | Plot Info | Status | Errors | Communication | Network

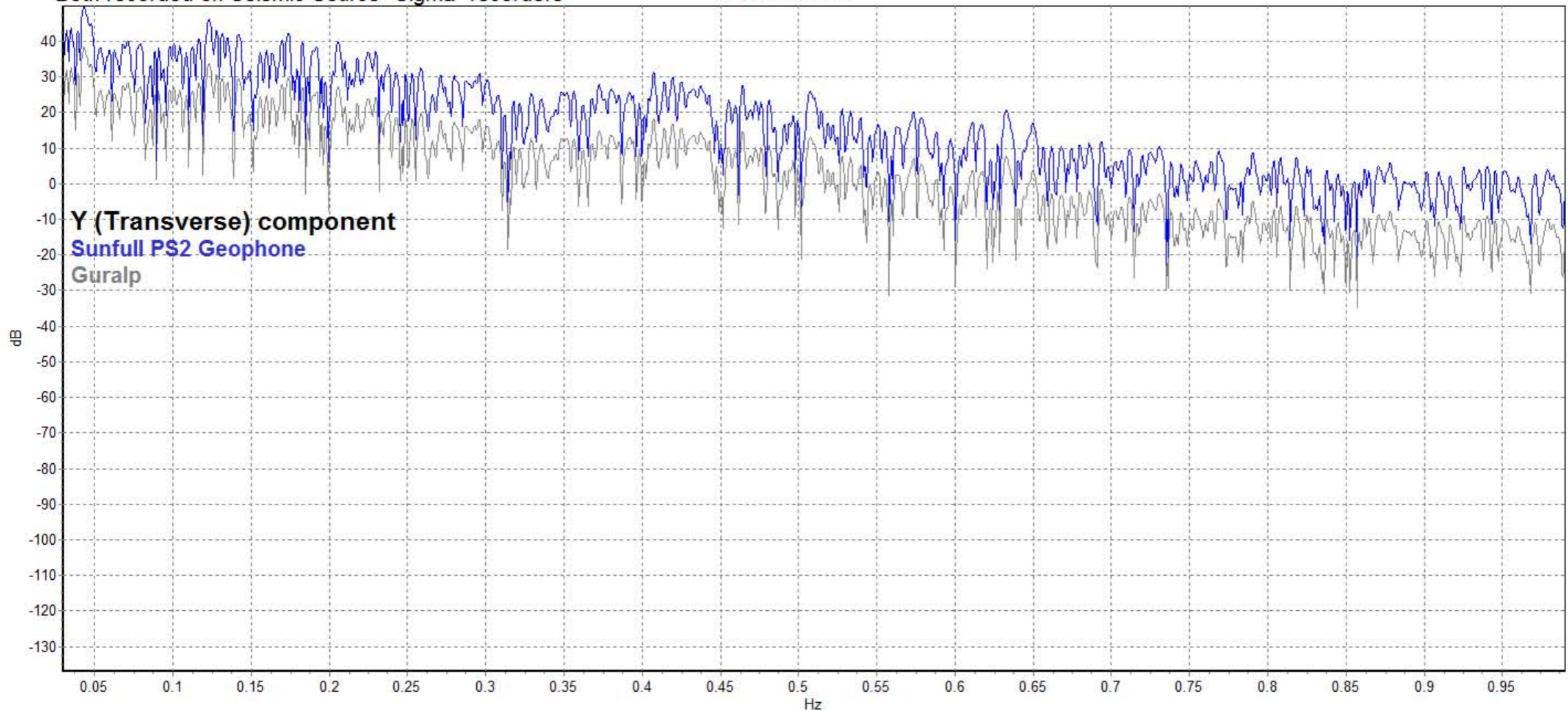
Mexico\_mag7\_Guralp\_1200sec\_Event\_170919\_181800\_3 C data.sgy



### M7.1 Raboso, Mexico recorded with Guralp (T=30s) and Sunfull Geophone (2Hz modified to 40s) in KawLake Array near Ponca City, OK

Both recorded on Seismic Source "Sigma" recorders

Amplitude Spectrum



— 2 - Chan 2 (Mexico\_mag7\_Guralp\_1200sec\_Event) — 2 - Chan 2 (Mexico\_mag7\_PS2\_1200sec\_Event\_17)

**Recording 2020 km from EQ<<<< By BC-Geophysics in Boulder City, NV for Seismic Source Company in Ponca City, OK**

Absolute Max  
 Equalize  
 AGC  
Window msec:   
 Individual Scale

Chan	Scale
<input type="checkbox"/> 1	3.8255361599
<input checked="" type="checkbox"/> 2	5.5758166122
<input type="checkbox"/> 3	5.2522349184

Scale     
 Clip Channels