

المركز الوطني للبحث المطبق في هندسة مقاومة الزلازل

Centre National de Recherche appliquée en Génie Parasismique
National Center of Applied Research in Earthquake Engineering

CGS

Accelerometric & Seismic Networks

M. CHIKH⁽¹⁾, J.L. CHATELAIN⁽²⁾, A. MAGGI⁽³⁾, D. BOUZIANE⁽¹⁾,
K. ABBAS⁽¹⁾, N. LAOUAMI⁽¹⁾, N. & SLIMANI⁽¹⁾

(1) Centre National de Recherche Appliquée en Génie Parasismique, Algérie

(2) Institut de Recherche pour le Développement (IRD/LGIT, Grenoble - France)

(3) EOST-IPGS, CNRS/Univ. Strasbourg, France

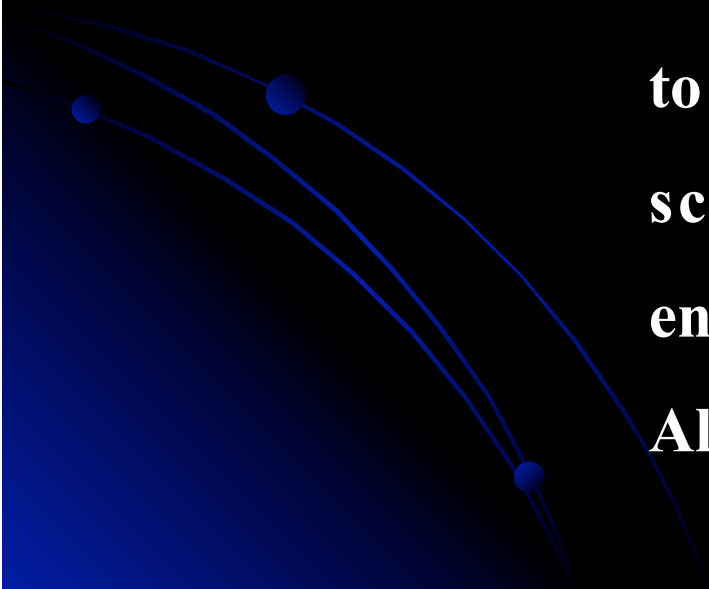
Rue Kaddour Rahim, BP 252 Hussein-Dey, Alger, Algérie.

Tel: 021.495547 à 49; 021.495560 à 62 Fax: 021.495536;

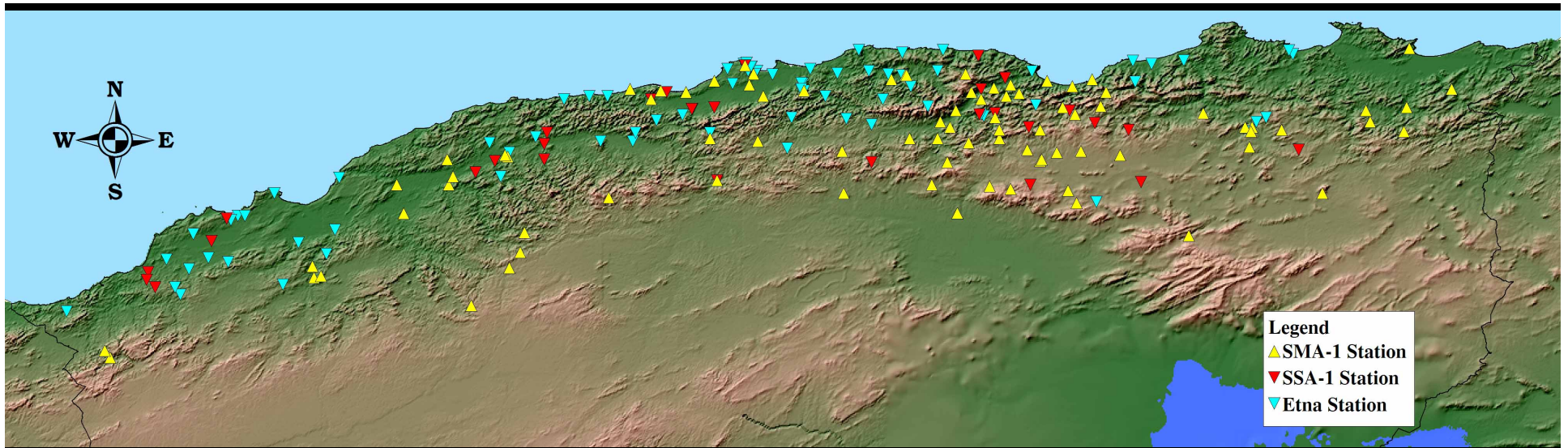
E-mail : cgsd@wissal.dz ; cgsd@cgs-dz.org, Web : www.cgs-dz.org

Centre National de Recherche Appliquée en Génie Parasismique (CGS)

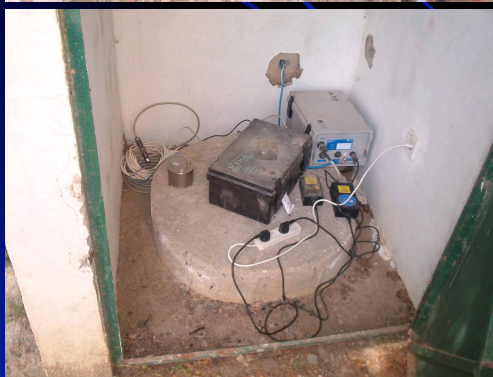
(National Center of Applied Research in Earthquake Engineering)



CGS is an organization whose objective is to develop, implement and disseminate scientific knowledge and technical engineering to help reduce seismic risk in Algeria.



Algerian Accelerometric Network distribution

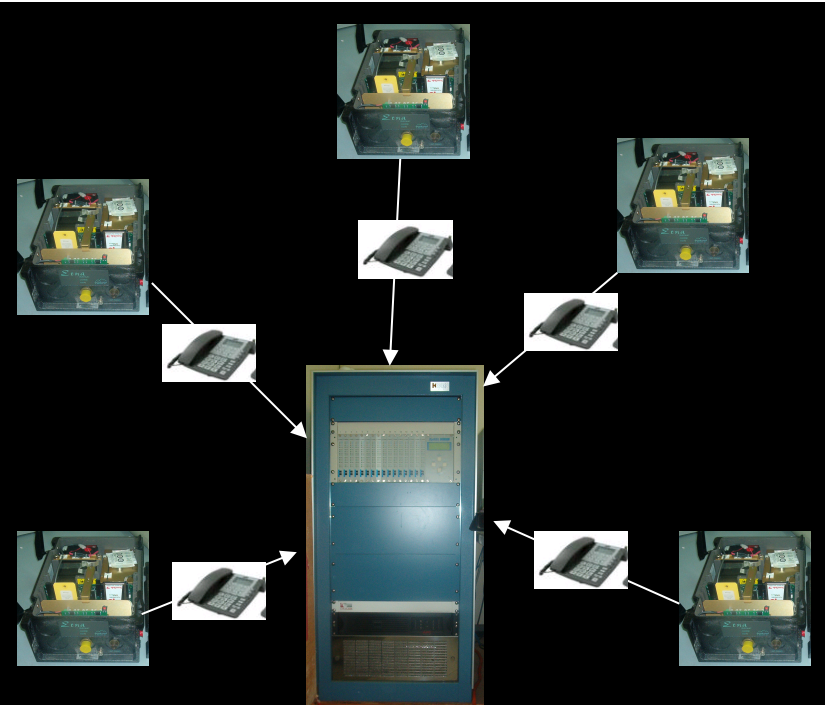


170 analog stations SMA-1
40 digital stations SSA-1
125 digital stations Etna

Free field Accelerometric
station installation



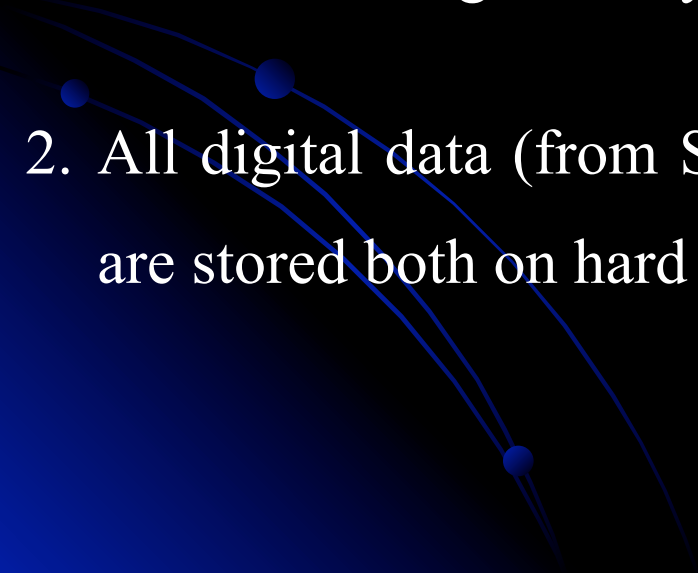
Accelerograph shelter
(TEXANA-JIJEL)



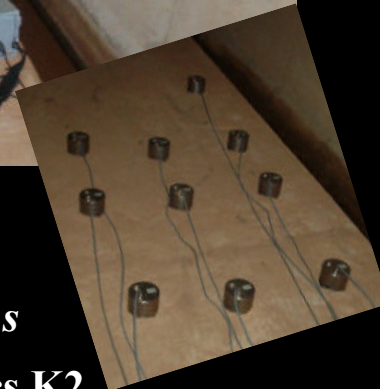
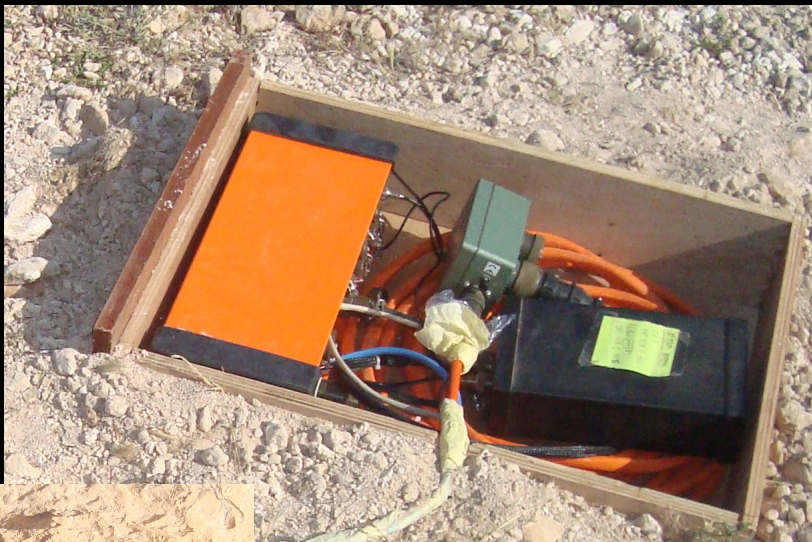
**Communication armor
(Etna stations)**

Data are collected manually at each regular visit to the stations

Data archiving is two ways made

1. Analog data (photo film's from SSA-1 stations) are archived by traditional way in dry and constant temperature environment, then, the data are digitized by 200sps steps using SCANVIEW software.
 2. All digital data (from SSA-1, Etna and digitized data from SMA-1) are stored both on hard disk and DVD' s.
- 

In 2003, CGS acquired 5 broadband stations (National network)
and 10 short period stations (aftershock's recording).



Broad Band station

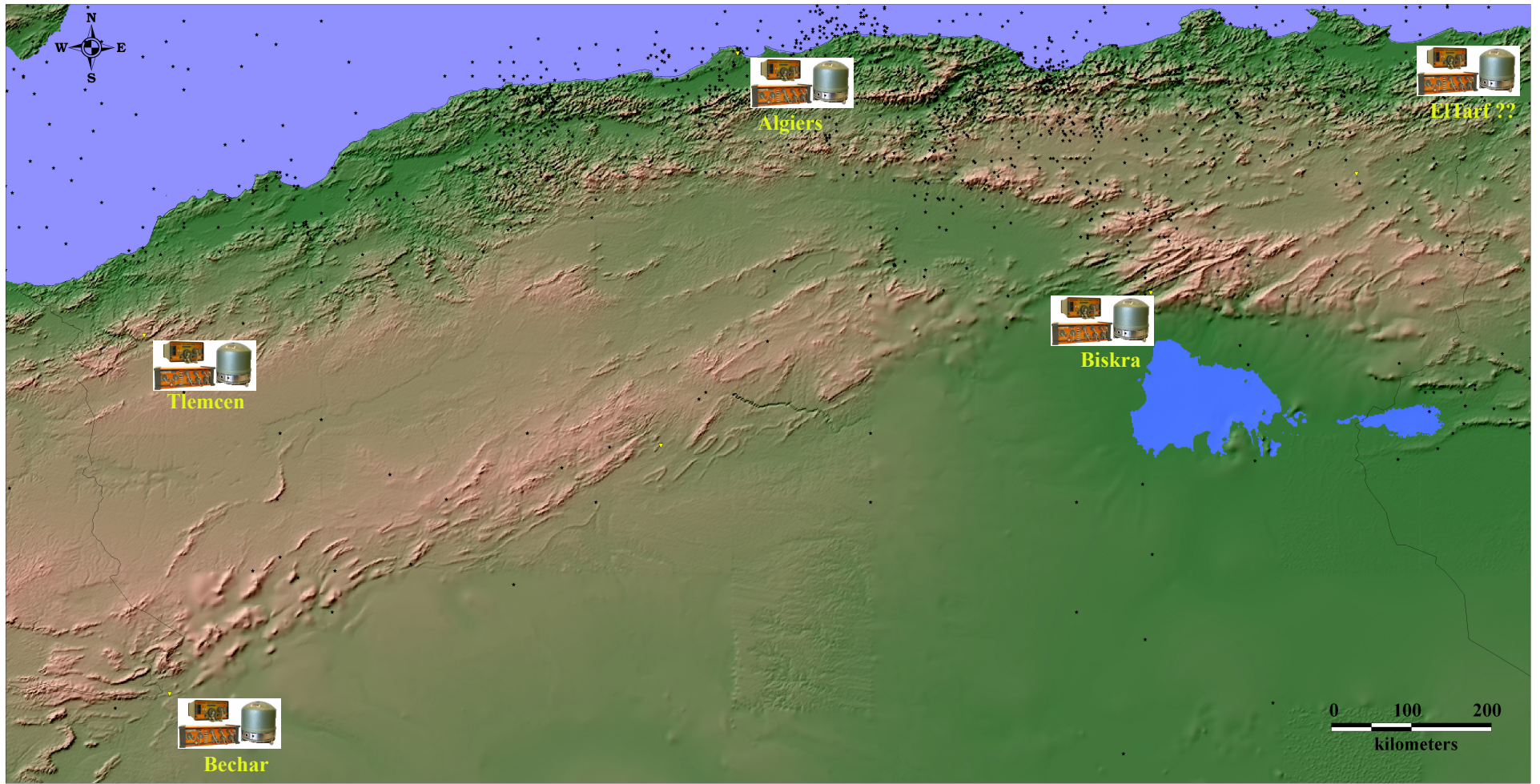
Data logger Quanterra Q330
and Packet Baler Model 14D

Sensor Strikisen STS2

Short period stations

Data logger Kinometrics K2

Sensor Lennartz LE-3Dlite



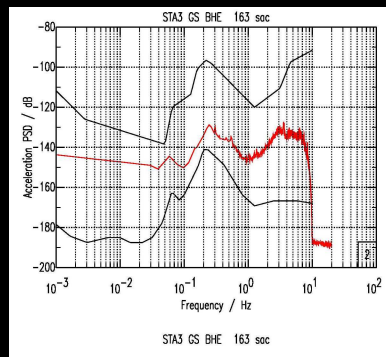
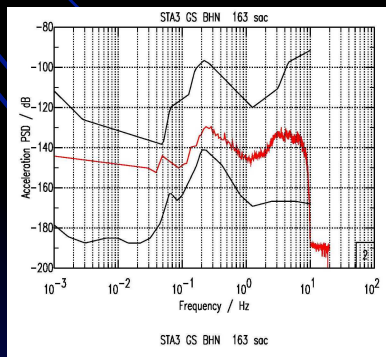
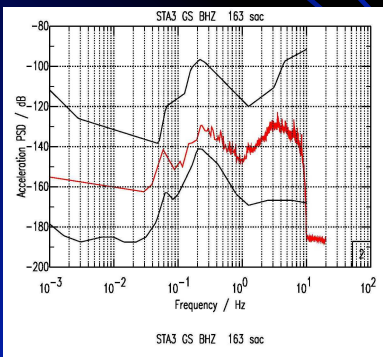
Seismic stations distribution (CGS National Seismic Network)

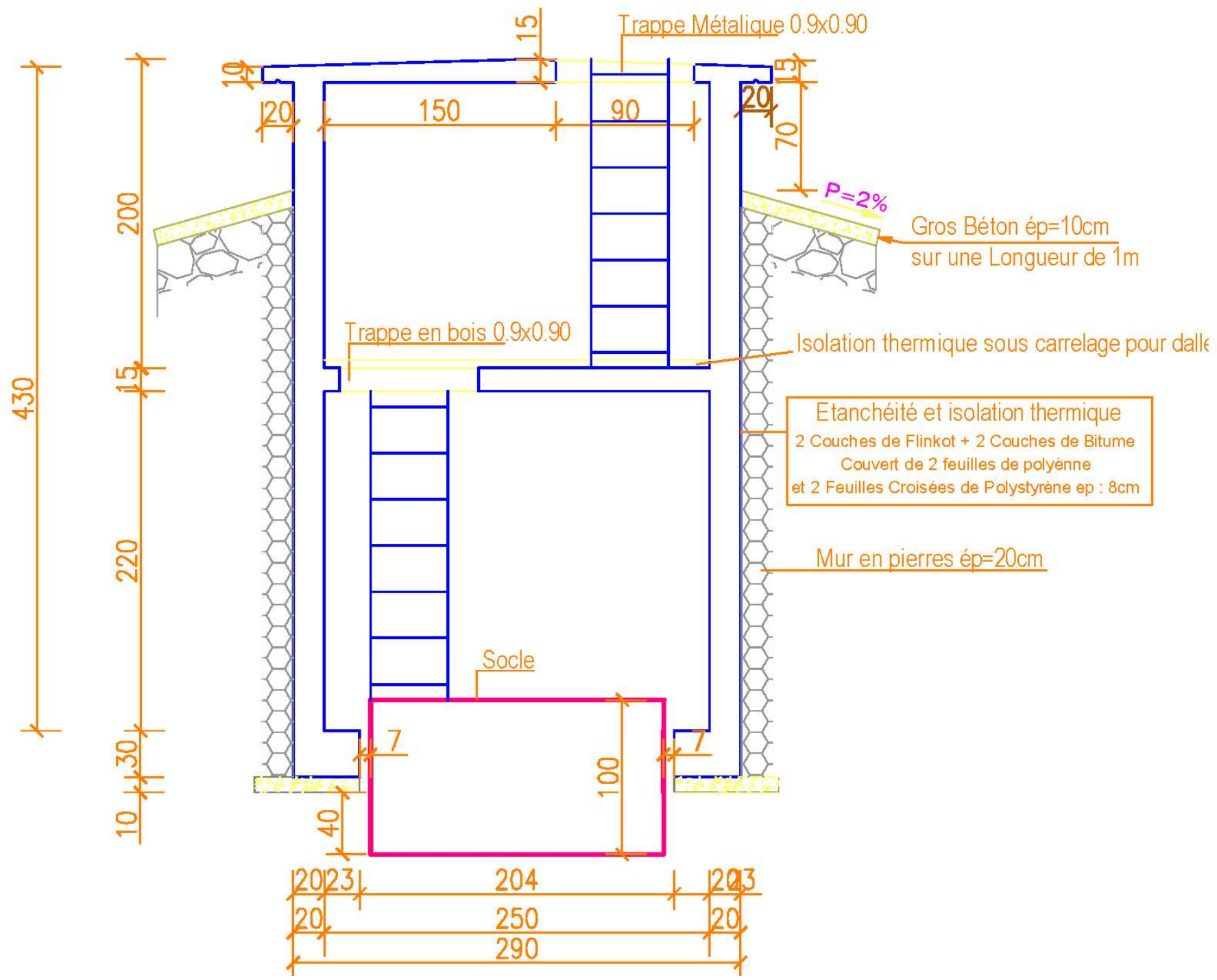
Algiers

Accelerometer & seismic Broad Band Station



Power spectral Density (PSD)
Algiers BB Station







Retrieving and Archiving Data

(Seismic Network)

First stage, data will be collected manually at each regular visit to stations.

Second stage, the seismological stations will be connected to Internet

Third stage, real time acquisition will be implemented.

Data will be stored both on hard disk and DVD' s.