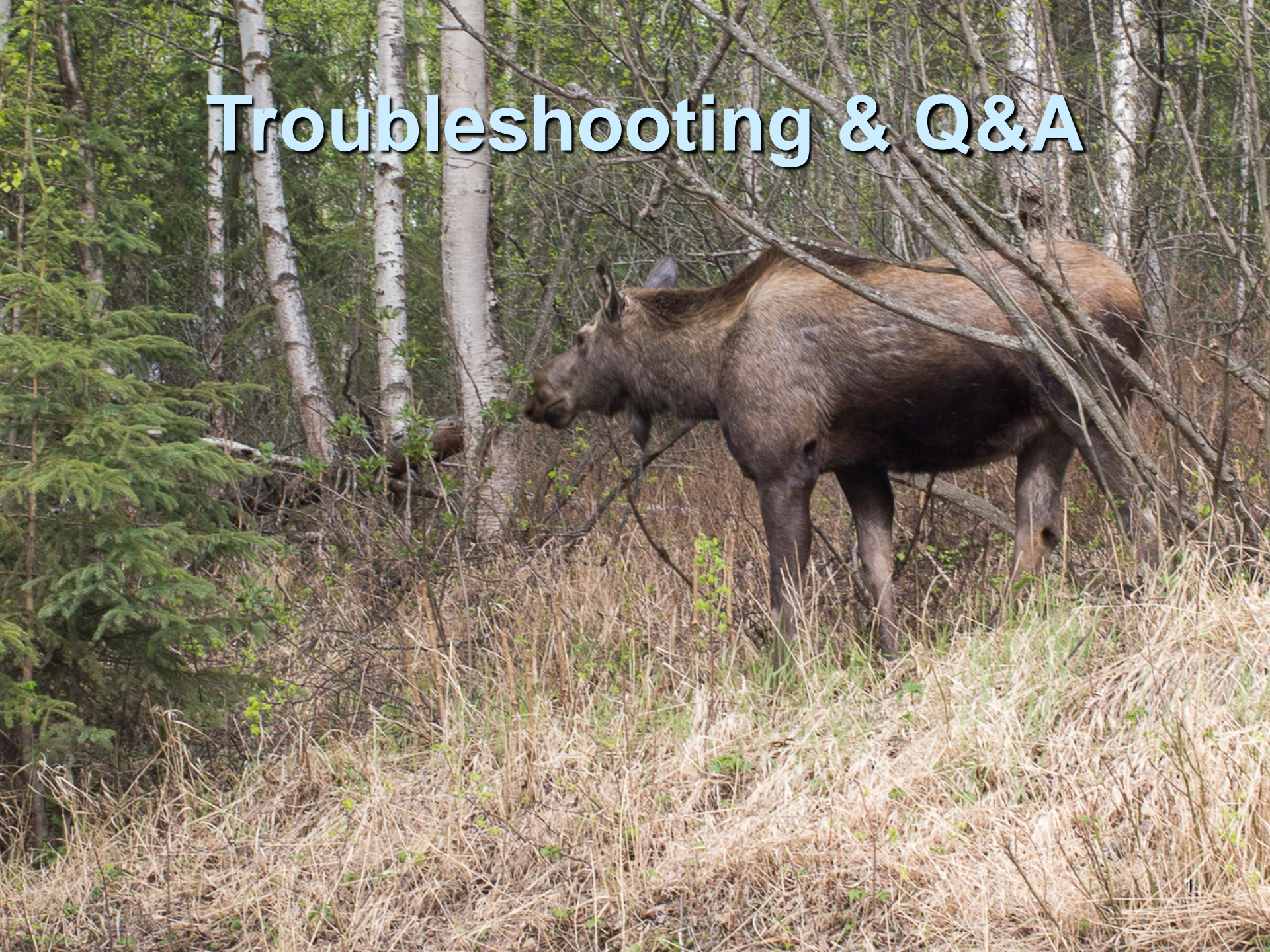


Troubleshooting & Q&A



SeisComP3 Troubleshooting

- scrttpv Real Time Trace Viewer
- scqcv Quality Control GUI
- slinktool to check the status of the seedlink server
 - slinktool -Q :
- SOME log files are in hidden .seiscomp3 directory that begins with a period. Directories starting with a period are hidden in Linux, you won't see them with 'ls' you need to use 'ls -a'
 - .seiscomp3/log
- SOME log files are in the seiscomp3 directory without a period
 - seiscomp3/var/log



Binding warning

- Double click on a binding on the left – you get a warning you're editing the parameter for multiple stations!
- You may think you're affecting only one station when you click a binding listed under one station on the left. You aren't.
- You need to create a profile for a single station if you only want to affect one station with a profile change.



Clear Seedlink

If you were doing a playback, you may wish to clear the seedlink buffer.

Stop SeisComP3

3- cleanout seedlink buffer

```
~/seiscomp3/var/lib/seedlink/buffer$ rm -rf *
```

```
~/seiscomp3/var/lib/seedlink/buffer$ rm -rf  
.dummy/
```



Clear Slarchive

The location of your miniseed archive saved by slarchive and used by arclink is here by default:

`seiscomp3/var/lib/archive`

It is possible to manually delete files from here if you need to for some reason.



scqcv

You can check the quality control GUI scqcv, but note that you need to have the seiscomp3 scqc module enabled and running to use it



Advanced Troubleshooting

You can see messages passing through the system with scmm

